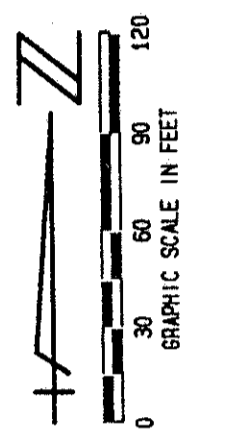


STATE OF FLORIDA  
COUNTY OF PALM BEACH  
THIS PLAT WAS FILED FOR  
RECORD \_\_\_\_\_ DAY OF \_\_\_\_\_  
AD, 1995 AND DULY RECORDED  
IN PLAT BOOK \_\_\_\_\_ ON PAGES  
\_\_\_\_\_ AND \_\_\_\_\_  
DOROTHY H. WILKEN, CLERK  
BY: \_\_\_\_\_, D. C.

CIRCUIT COURT SEAL



UNPLATTED  
PET. 80-215K  
REC. #0001  
5/3/3/K

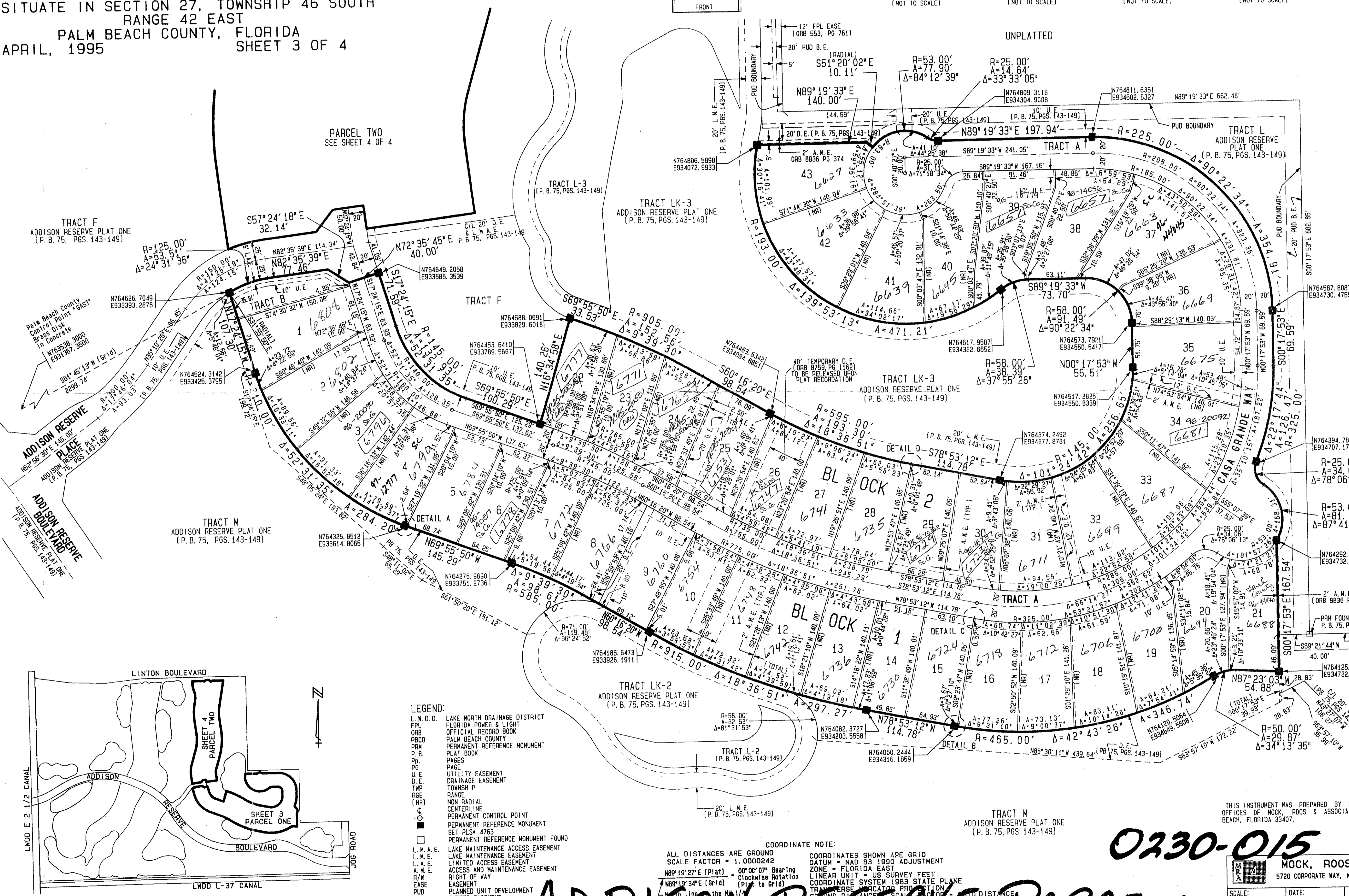
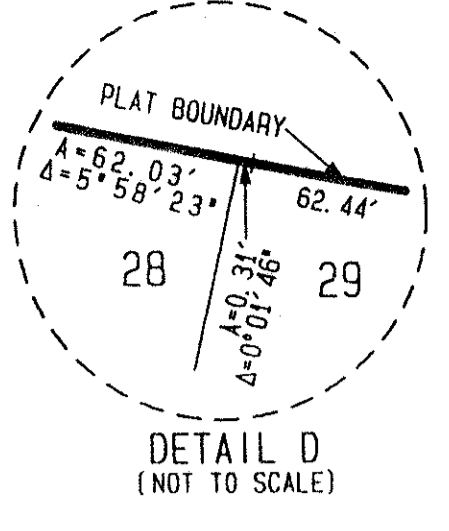
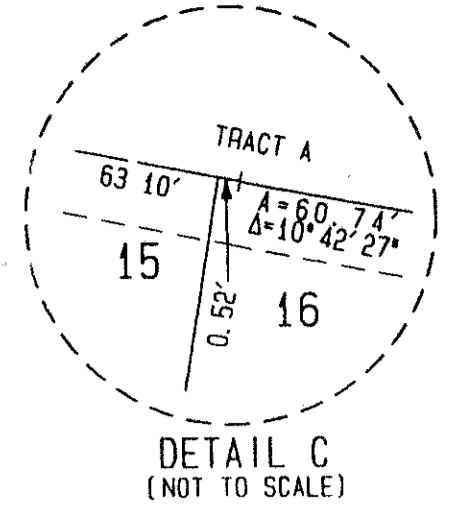
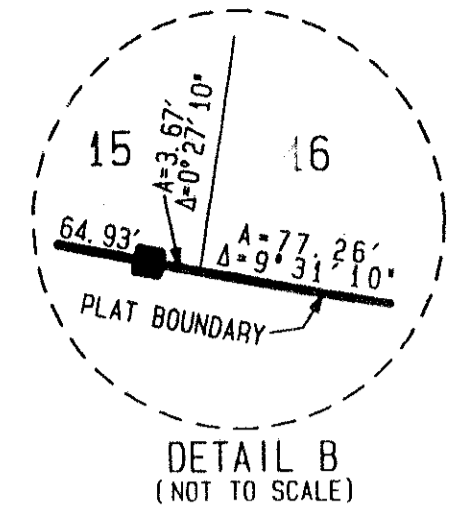
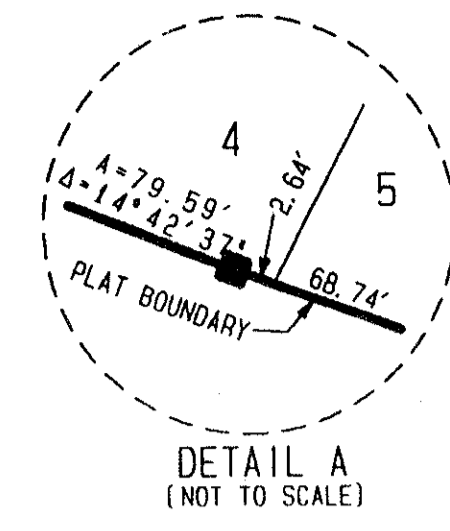
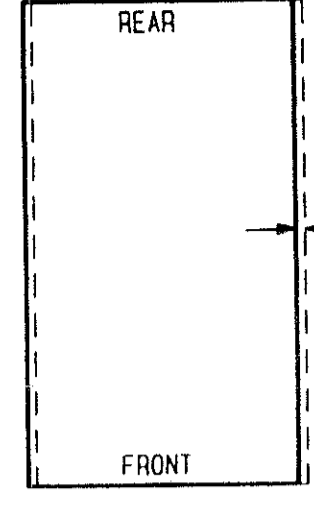
GLENEAGLES/  
POLO CLUB  
WEST PUD  
ADDISON RESERVE  
TRACTS  
1+2

# ADDISON RESERVE PARCELS ONE & TWO

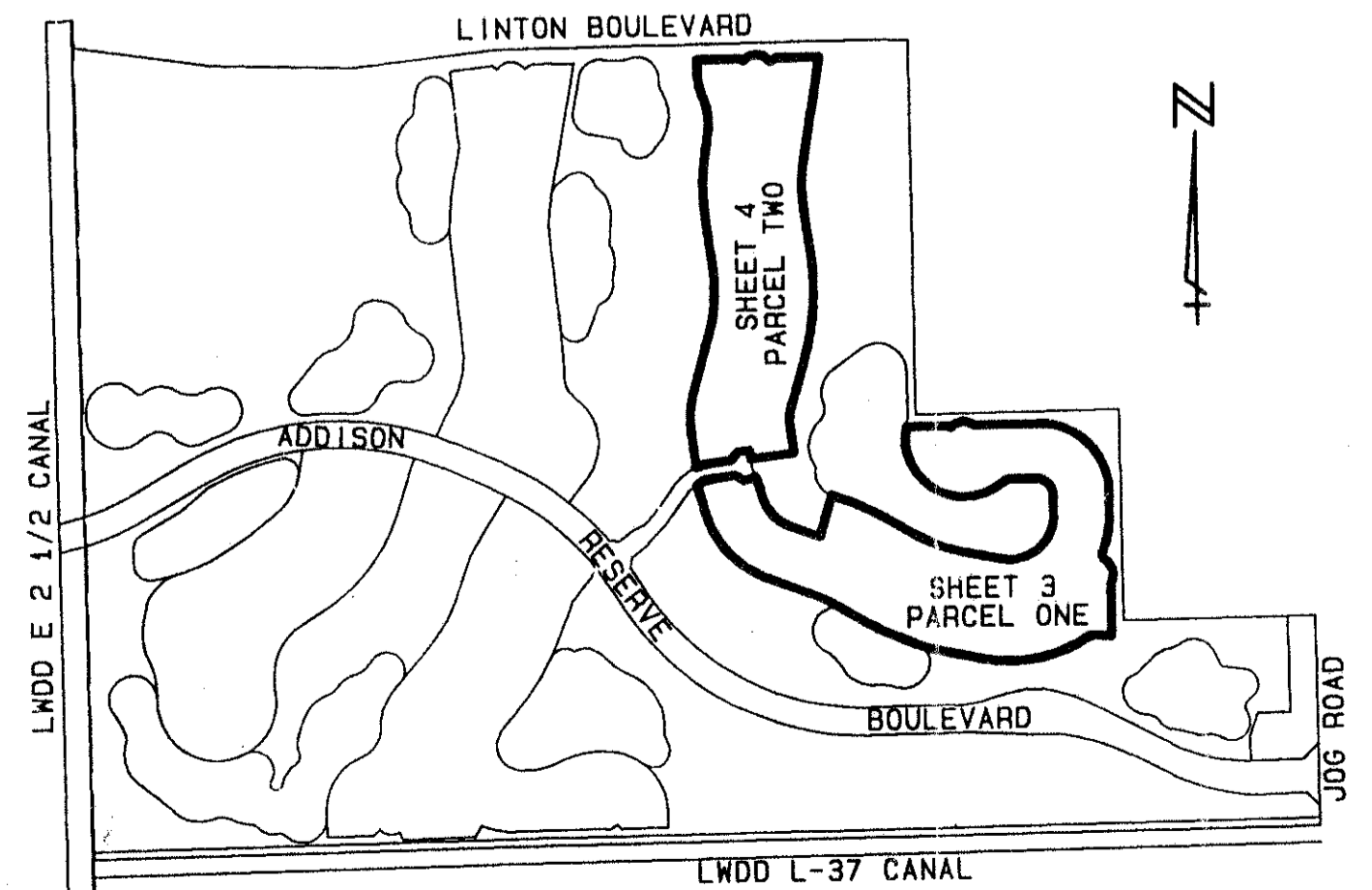
PART OF GLENEAGLES/POLO CLUB WEST P. U. D.  
BEING A REPLAT OF TRACTS 1 AND 2  
ADDISON RESERVE PLAT ONE (P. B. 75 PGS. 143-149)  
SITUATE IN SECTION 27, TOWNSHIP 46 SOUTH  
RANGE 42 EAST  
PALM BEACH COUNTY, FLORIDA  
APRIL, 1995 SHEET 3 OF 4

NOTE: AN ACCESS AND MAINTENANCE EASEMENT, 2 FEET IN WIDTH, EXISTS ON EACH LOT FROM THE FRONT TO THE REAR ADJACENT TO AND CONTIGUOUS WITH THE ZERO LOT LINE OF THE ADJOINING LOT. THIS EASEMENT IS FOR ACCESS AND MAINTENANCE AND IS IN FAVOR OF THE ADJOINING LOT, ITS SUCCESSORS AND ASSIGNS, WITHOUT RECOURSE TO PALM BEACH COUNTY.  
SEE "DETAIL FOR ACCESS AND MAINTENANCE EASEMENT".

### DETAIL FOR ACCESS AND MAINTENANCE EASEMENT (NOT TO SCALE)



SUBDIVISION ADDISON RESERVE  
PARCELS ONE & TWO  
PAGE 6  
BOOK 76  
FLOOD ZONE B  
QUAD # 37  
ZONING KTS  
CD # 80-215  
ZIP CODE 33496  
PUD NAME GLENEAGLES/POLO CLUB WEST



SHEET LOCATION MAP  
NOT TO SCALE

- LEGEND:
- L. M. D. D. LAKE WORTH DRAINAGE DISTRICT
  - FL. FLORIDA POWER & LIGHT
  - ORB. OFFICIAL RECORD BOOK
  - PRCO. PALM BEACH COUNTY
  - PRM. PERMANENT REFERENCE MONUMENT
  - P. B. PLAT BOOK
  - PG. PAGE
  - P. B. PAGE
  - U. E. UTILITY EASEMENT
  - D. E. DRAINAGE EASEMENT
  - T. M. TOWNSHIP
  - R. C. RANGE
  - NR. NON-RADIAL
  - C. CENTERLINE
  - PERM. PERMANENT CONTROL POINT
  - PERM. PERMANENT REFERENCE MONUMENT
  - SET PLS. # 4763
  - PERM. PERMANENT REFERENCE MONUMENT FOUND
  - L. M. A. E. LAKE MAINTENANCE ACCESS EASEMENT
  - L. M. E. LAKE MAINTENANCE EASEMENT
  - L. A. E. LIMITED ACCESS EASEMENT
  - A. M. E. ACCESS AND MAINTENANCE EASEMENT
  - R. W. RIGHT OF WAY
  - E. EASEMENT
  - P. U. D. PLANNED UNIT DEVELOPMENT
  - P. U. D. BUFFER EASEMENT
  - B. E. BUFFER EASEMENT
  - NR. NON-RADIAL
  - TYP. TYPICAL

COORDINATE NOTE:  
ALL DISTANCES ARE GROUND  
SCALE FACTOR = 1.0000242  
DATUM = NAD 83 1990 ADJUSTMENT  
ZONE = FLORIDA EAST  
LINEAR UNIT = US SURVEY FEET  
COORDINATE SYSTEM = 1983 STATE PLANE  
TRANSVERSE MERCATOR PROJECTION  
GROUND DISTANCE / SCALE FACTOR = PLAT DISTANCE

TRACT M  
ADDISON RESERVE PLAT ONE  
(P. B. 75, PGS. 143-149)

0230-015 76/6

THIS INSTRUMENT WAS PREPARED BY MARY HANNA CLODFELTER, P.L.S., IN THE OFFICES OF MOCK, ROOS & ASSOCIATES, INC., 5720 CORPORATE WAY, WEST PALM BEACH, FLORIDA 33407.

MOCK, ROOS & ASSOCIATES, INC.  
5720 CORPORATE WAY, WEST PALM BEACH, FL 33407 (407) 683-3113

ADDISON RESERVE  
PARCELS ONE & TWO  
PART OF GLENEAGLES/POLO CLUB WEST P. U. D.  
SECTION 27, TOWNSHIP 46 SOUTH, RANGE 42 EAST